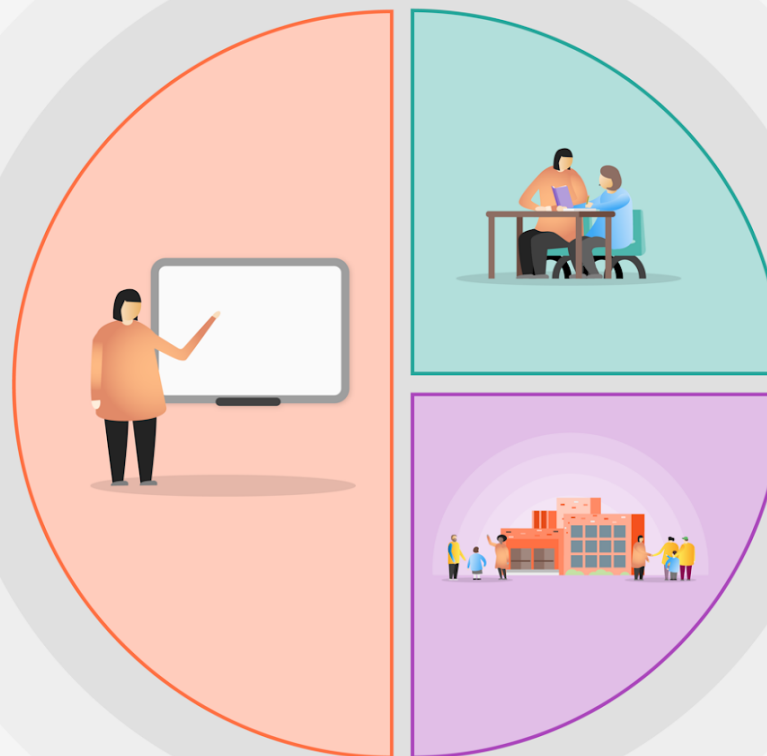


1 Teaching

- Quality First Teaching across all faculties delivering high quality, inclusive teaching for all students
- Continued implementation of cognitive learning strategies to support new learning and retrieval of key subject knowledge
- Targeted assessments to provide missing baseline data and inform support needs
- Curriculum reviews at KS3 and KS4 to enable skills deficits to be addressed
- Technology and support platforms in place to ensure all learners have access to high quality remote provision when required
- CPD focus on best practice via pedagogical and content-based masterclasses



2 Targeted academic support

- Literacy and numeracy small group interventions
- Engagement with the National Tutoring Programme to specifically support our disadvantaged and SEND students
- Small group intervention by teachers and external tutors depending on need.
- Increased use of LSA provision

3 Wider strategies

- Increased pastoral contact for disadvantaged and vulnerable students
- Supporting SEL needs in our school community through an embedded whole-school approach
- Ongoing support for families with attendance issues
- Additional counselling provision